

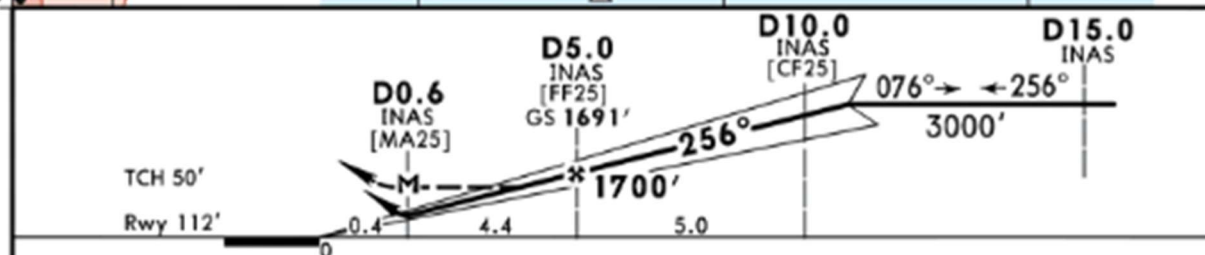
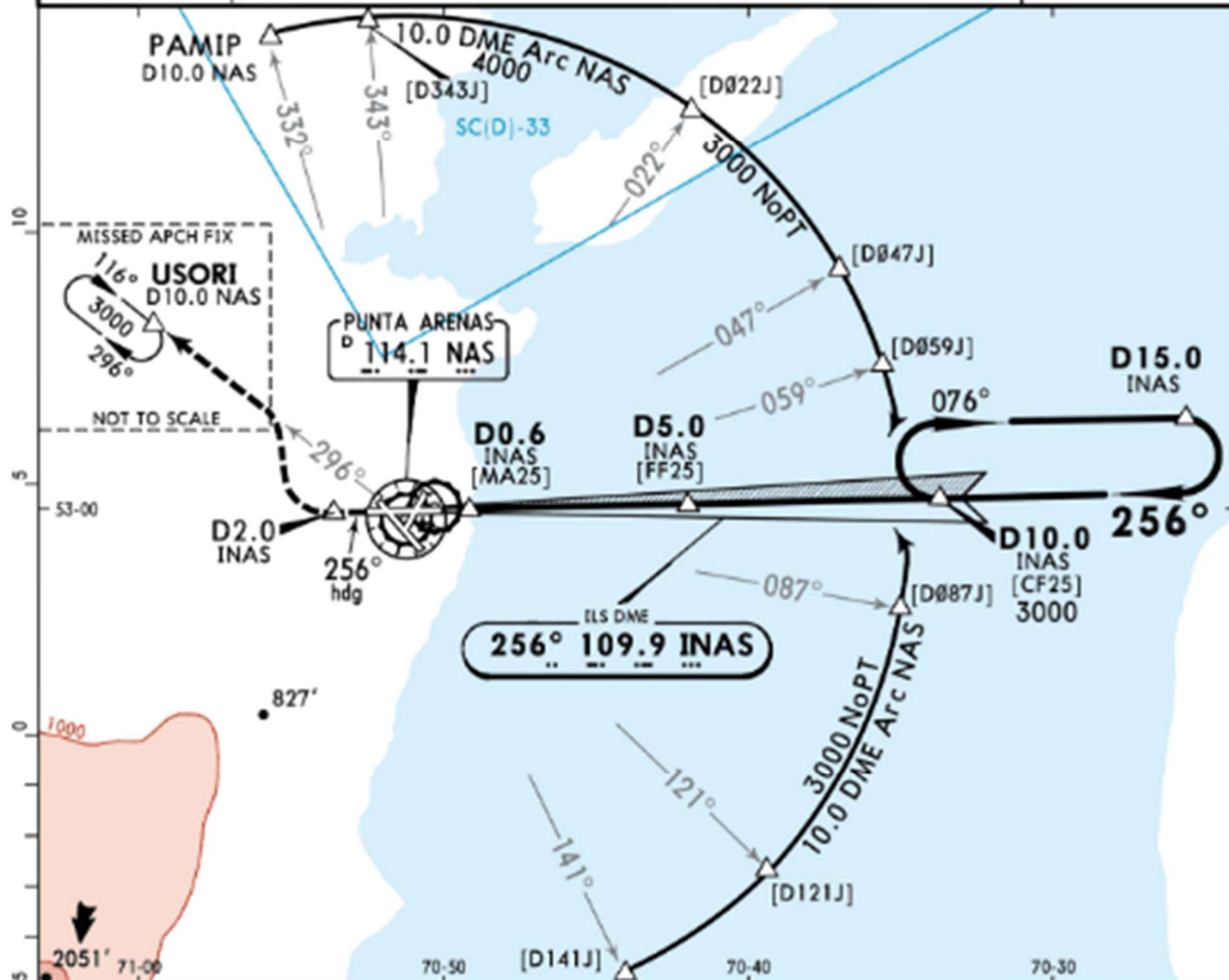
SCCI/PUQ
CARLOS IBANEZ
DEL CAMPO INTL

JEPPESEN
4 AUG 23
Eff 10 Aug 11-3

PUNTA ARENAS, CHILE
ILS Z or LOC Z Rwy 25

BRIEFING STRIP™

PUNTA ARENAS Center (R)			PUNTA ARENAS Tower		Ground
128.1 123.9			118.7		121.9
LOC INAS 109.9	Final Apch Crs 256°	D5.0 INAS 1691' (1579')	ILS DA(H) 312' (200')	Apt Elev 139' Rwy 112'	<div>4500</div> <div>MSA NAS VOR</div>
MISSED APCH: Climb on heading 256° until D2.0 INAS, turn RIGHT and continue climbing to 3000' to intercept NAS VOR R-296 outbound, direct to USORI, then according to ATC clearance.					
Alt Set: hPa Rwy Elev: 4 hPa Trans level: By ATC Trans alt: 10000'					
VOR and DME required.					



Gnd speed-Kts	70	90	100	120	140	160	PAPI	ALSF-1	↑ on	256° hdg	D2.0 INAS	
GS	3.00°	372	478	531	637	743						849
MAP at D0.6 INAS												
FAF to MAP	4.4	3:46	2:56	2:38	2:12	1:53						1:39
STRAIGHT-IN LANDING RWY 25								CIRCLE-TO-LAND				
1 ILS DA(H) 312' (200')				1 LOC (GS out) MDA(H) 380' (268')								
FULL				ALS out				Max Kts				
A	RVR 750m or 0.8 km			1.2 km		0.8 km		1.6 km		90	640' (501') - 1.6 km	
B										120		
C										140		
D										165		
								MDA(H)				
										800' (661') - 2.8 km		
										960' (821') - 4.4 km		
1 Procedure not authorized without INAS DME.												

Procedure not authorized without INAS DME.
CHANGES: Procedure title.
© JEPPESEN, 2001, 2023. ALL RIGHTS RESERVED.
NAVIGRAPH CHARTS INTENDED FOR FLIGHT SIMULATION ONLY - NOT FOR NAVIGATIONAL USE